



Twin Manors

Tour

By Wm. R. Robertson ©2022



TWIN MANORS

Needs to find a new home and is being offered
FOR SALE



TWIN MANORS

is FOR SALE

Twin Manors is a pair of 1/12th scale American Georgian houses built by Wm. R. Robertson in the 1980's

One of the twins was purchased and has been on permanent display at the **National Museum of Toys & Miniatures** since 1989

The one for sale had its debut in 1987 at the **National Geographic Society's** Explorer's Hall in Washington, D.C., it has since been in the artist's collection



Twin Manors is being offered
COMPLETE with CONTENTS

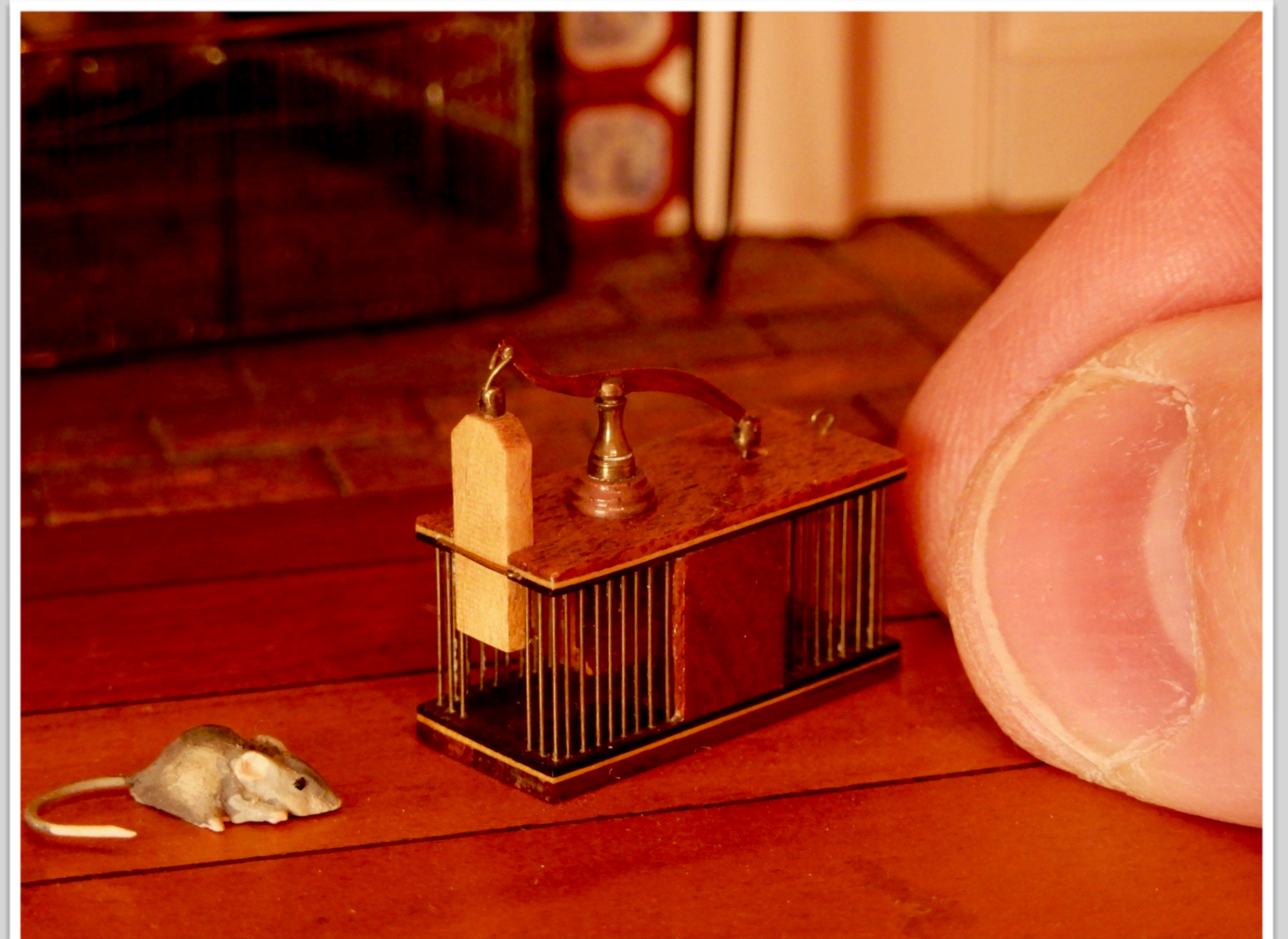


Including over 75 pieces by

Wm. R. Robertson



Fire place Cricket
1 of 2



Hepplewhite Mouse Trap,
1 of 6



Needlepoint Top Game Table
60 count by Esther Robertson
1 of 2

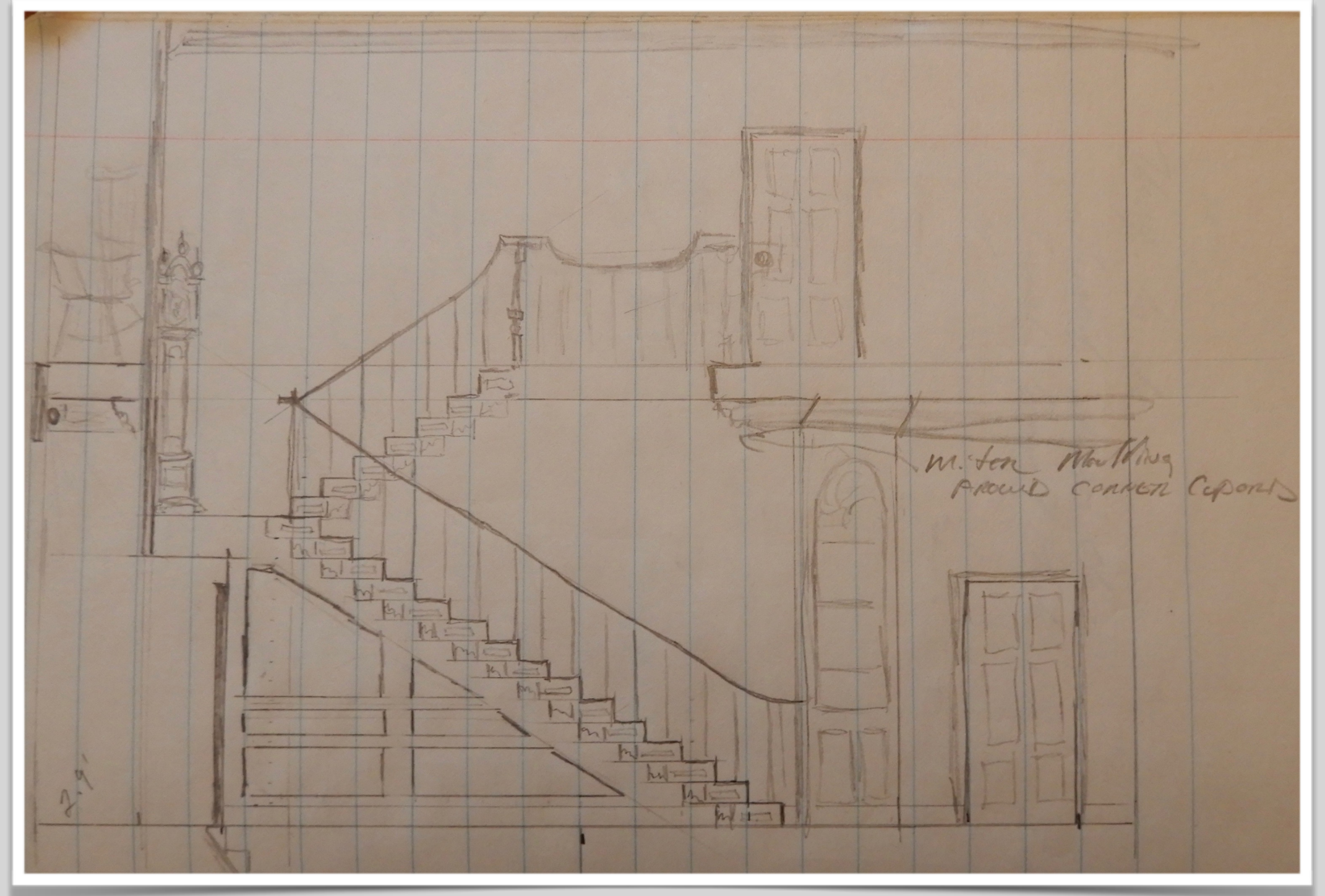
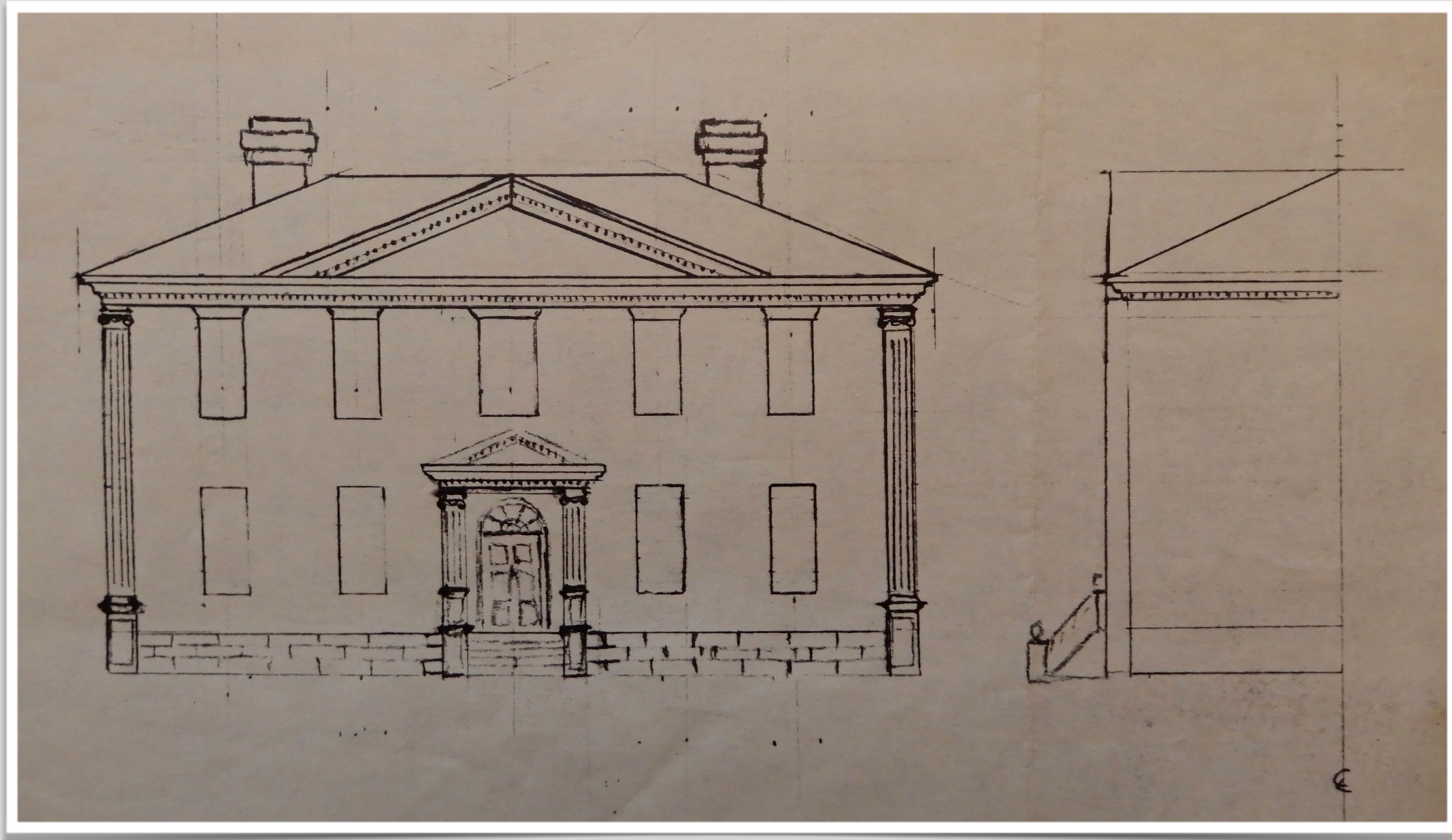
WRR's 1st Desk
1 of 9



Rhode Island Card Table
1 of 6



Twin Manors & Collection have been privately displayed all these years and it is now time for it to find a new home

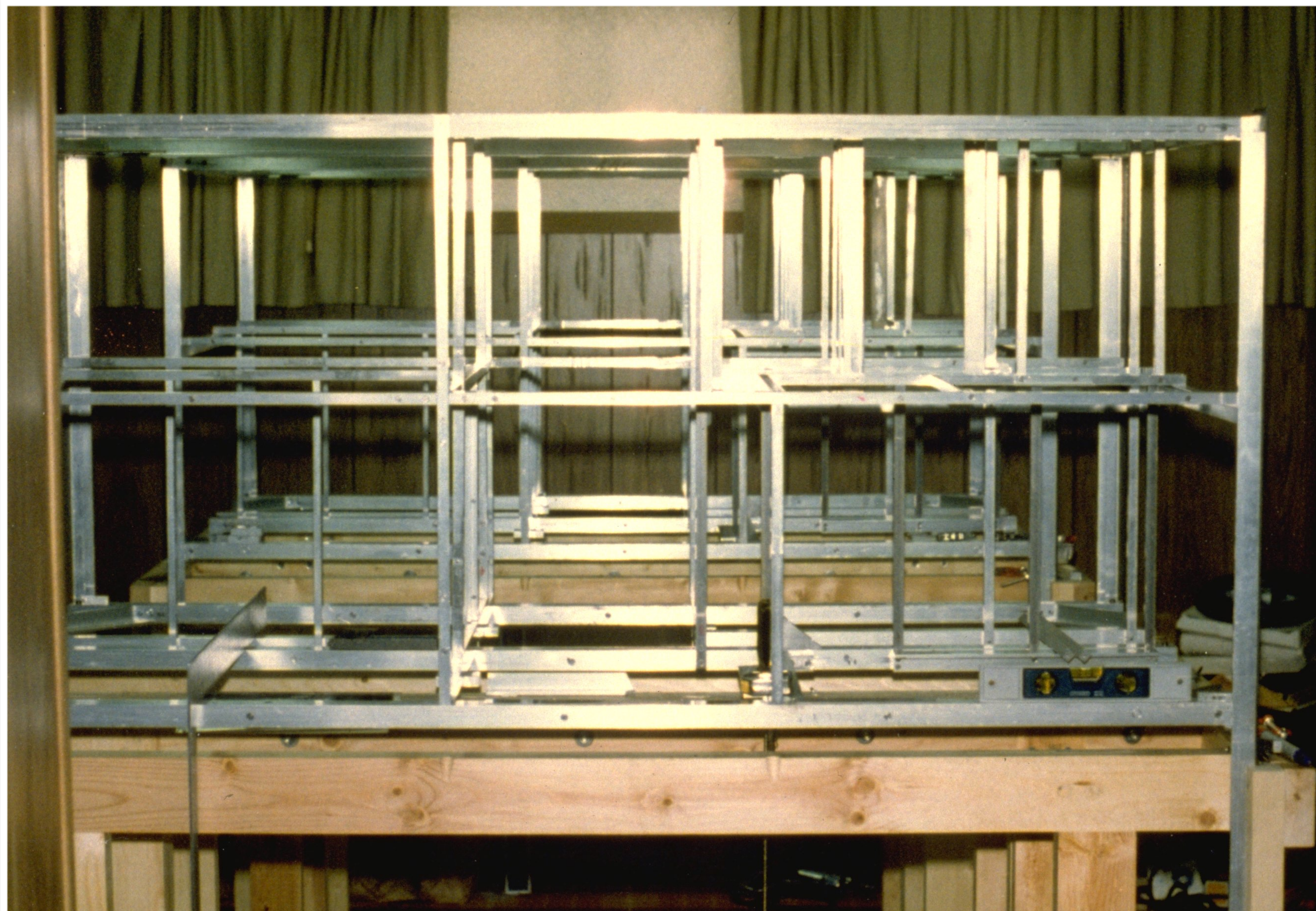


Robertson's early design drawings of Twin Manors, 1979-1980



Shown with the 1/8" design model* here are the Twins under construction in 1980s

*The design model is in the collection of the National Museum of Toys & Miniatures



Twin Manors is built with a combination of old world craftsmanship and high tech features such as an aluminum frame to allow for expansion and contraction to compensate for temperature change

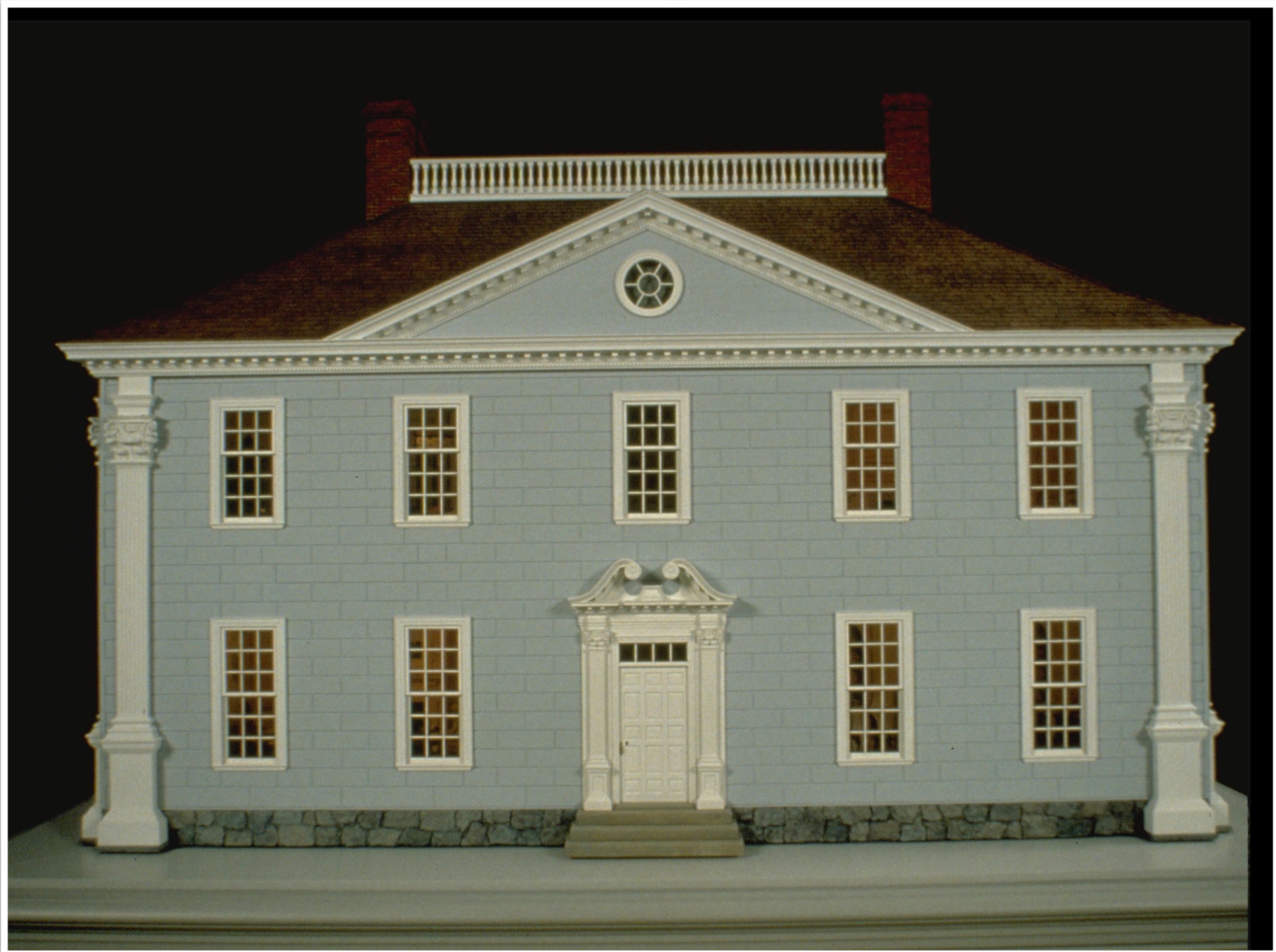


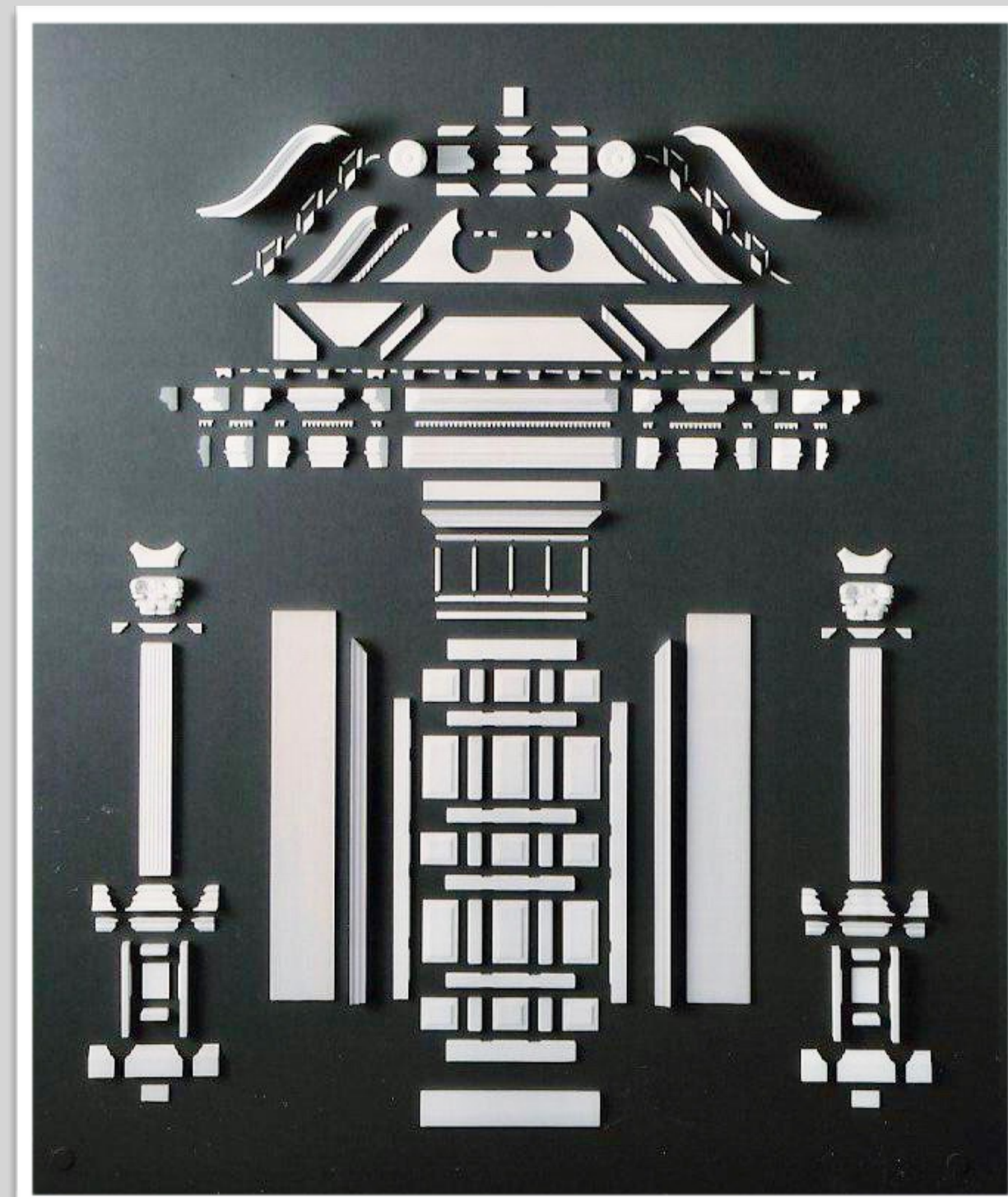
The front and back facades slide into the base for safe storage
NMTM Twin Manors shown



Twin Manors is made to be viewed from both front and back
The base is 76" x 52"





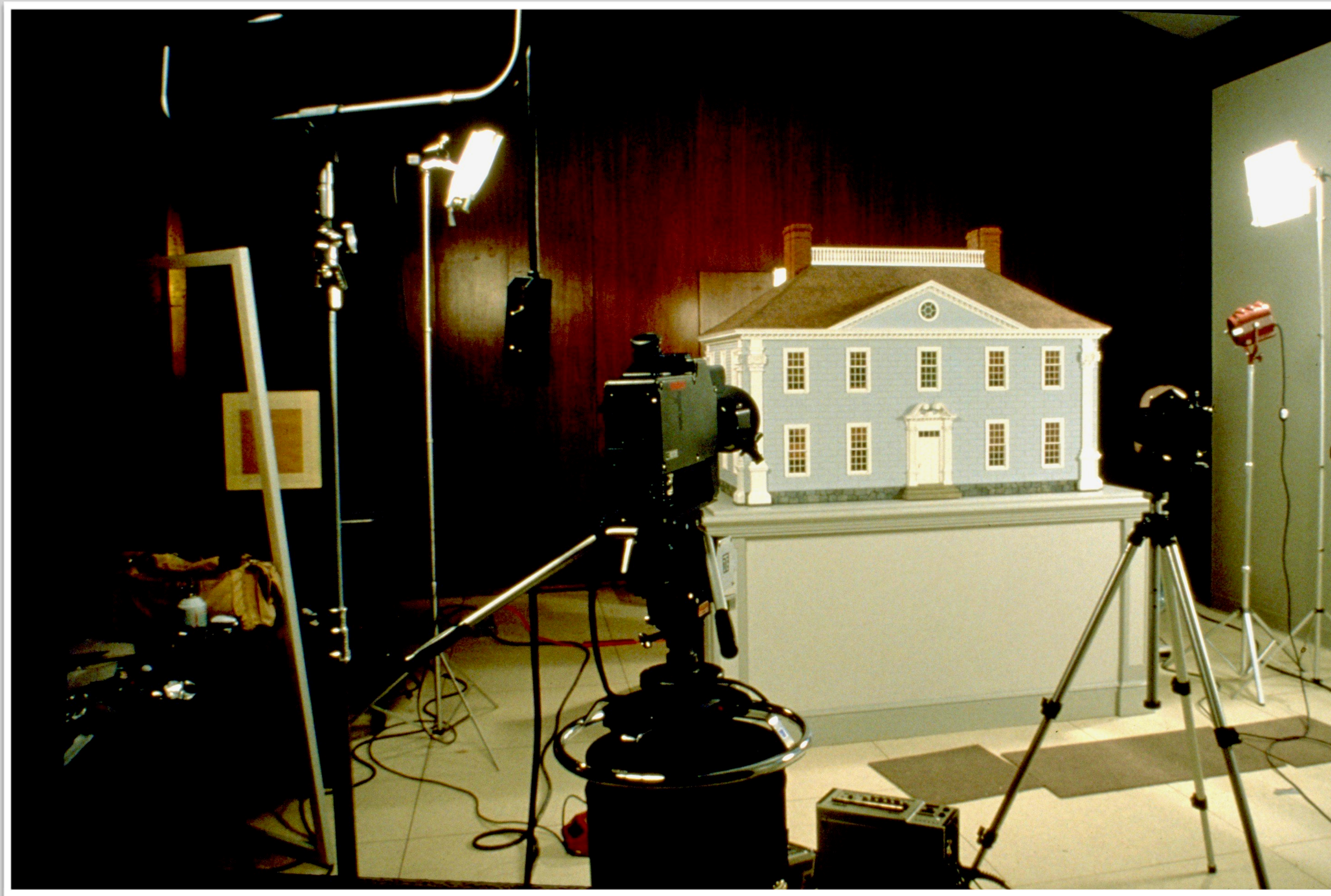


Front door, made from 216 pieces with rusticated faux stone and back door









Twin Manors has been published in dozens of magazines and videos, filming at Nat Geo in 1986



Christmas Card by the National Geographic Society



Featured in Traditional Home magazine



Kitchen at Christmas featured in Traditional Home magazine

Twin Manors contains the work of most of the MASTER
MINIATURE ARTISTS from the 1980s. Those followed by an
* were Founding Members of I.G.M.A.

Note, only some of the hundred plus Artists are listed by name in this presentation

Furniture by

Paul Runyon
Don Buttefield*
Betty Valentine
James Hastrich
Linda LaRoche
James Isom
Eric Pearson
Lou Murter
Joe Murter
Allen Theade
Tom Poitras
Edward Norton

Mark Murphy
Gerald Crawford
Richard Mann
Carol Hardy
Charles Krug
John Hodgson
Dennis Hillman
George Hoffman*
John Ferguson
Hank Taylor
Eugene Kupjack
Warren Dick



Linda LaRoche, *tall chest*



Paul Runyon, *chair & chest*



Linda Wexler & Don Dube





W. Foster Tracy*, *cello*
Edward Norton, *table*
John Hodgson, *chair & desk*



John Hodgson, *ribbon back chairs*
Wm R. & Esther Robertson, *game table & sofa*
Gerald Crawford, *tea table*



Don Buttfield, *chair*
Allen Thede, *chest*
Betty Valentine, *childs chair*



Esther Robertson, *sampler*
James Hastrich, *painted chest*
Carol Hardy, *chair*



Center Hall and Main Stairway



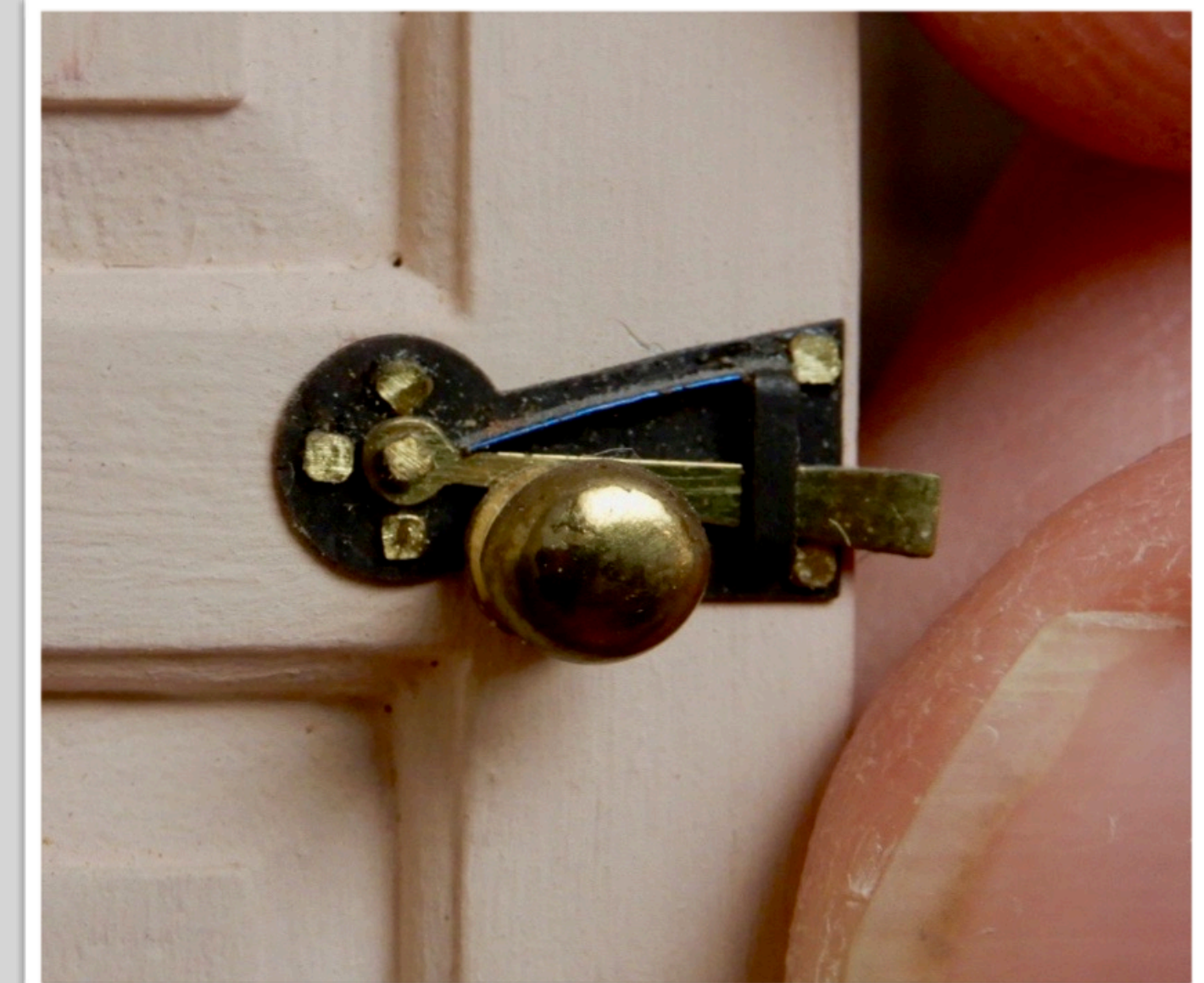
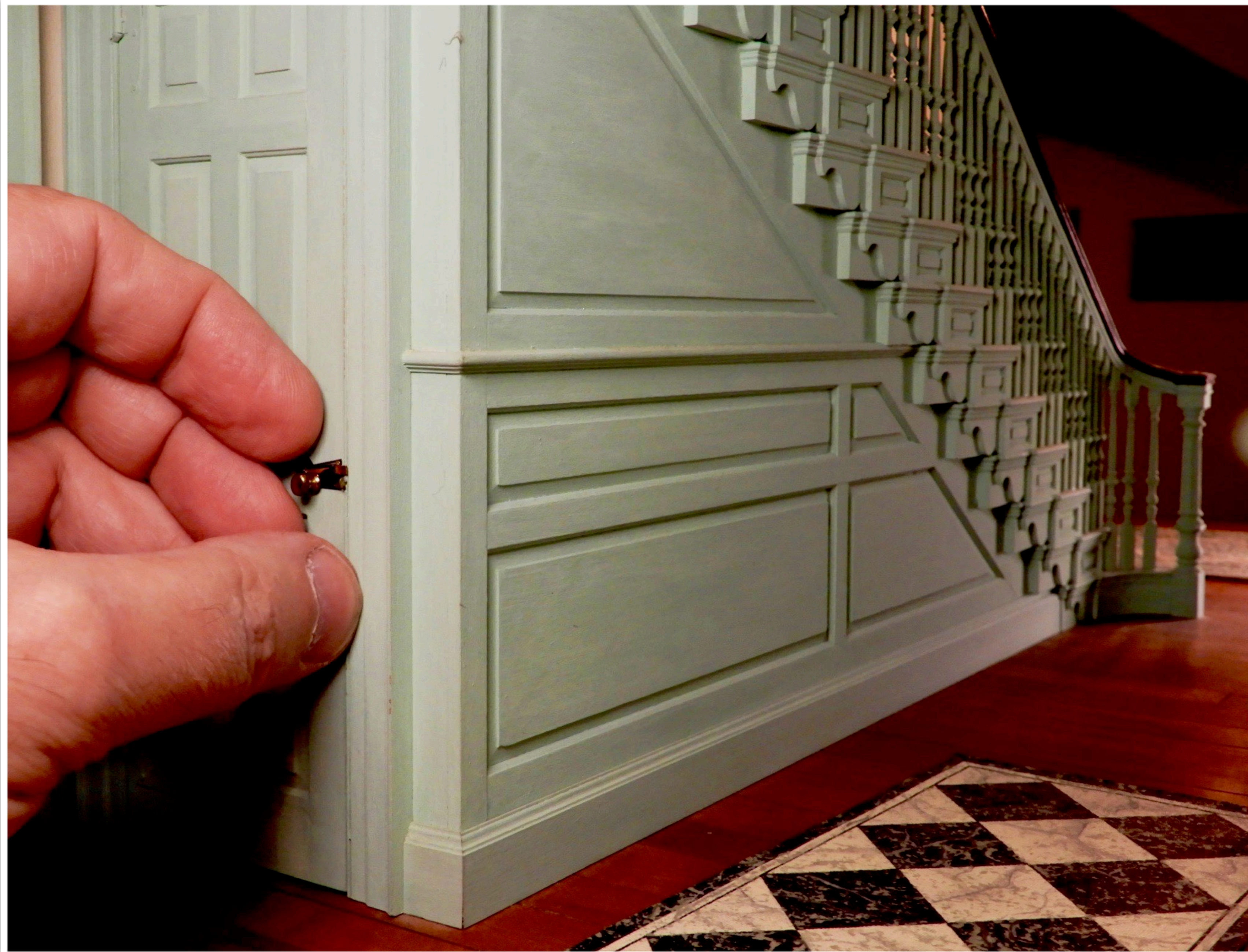












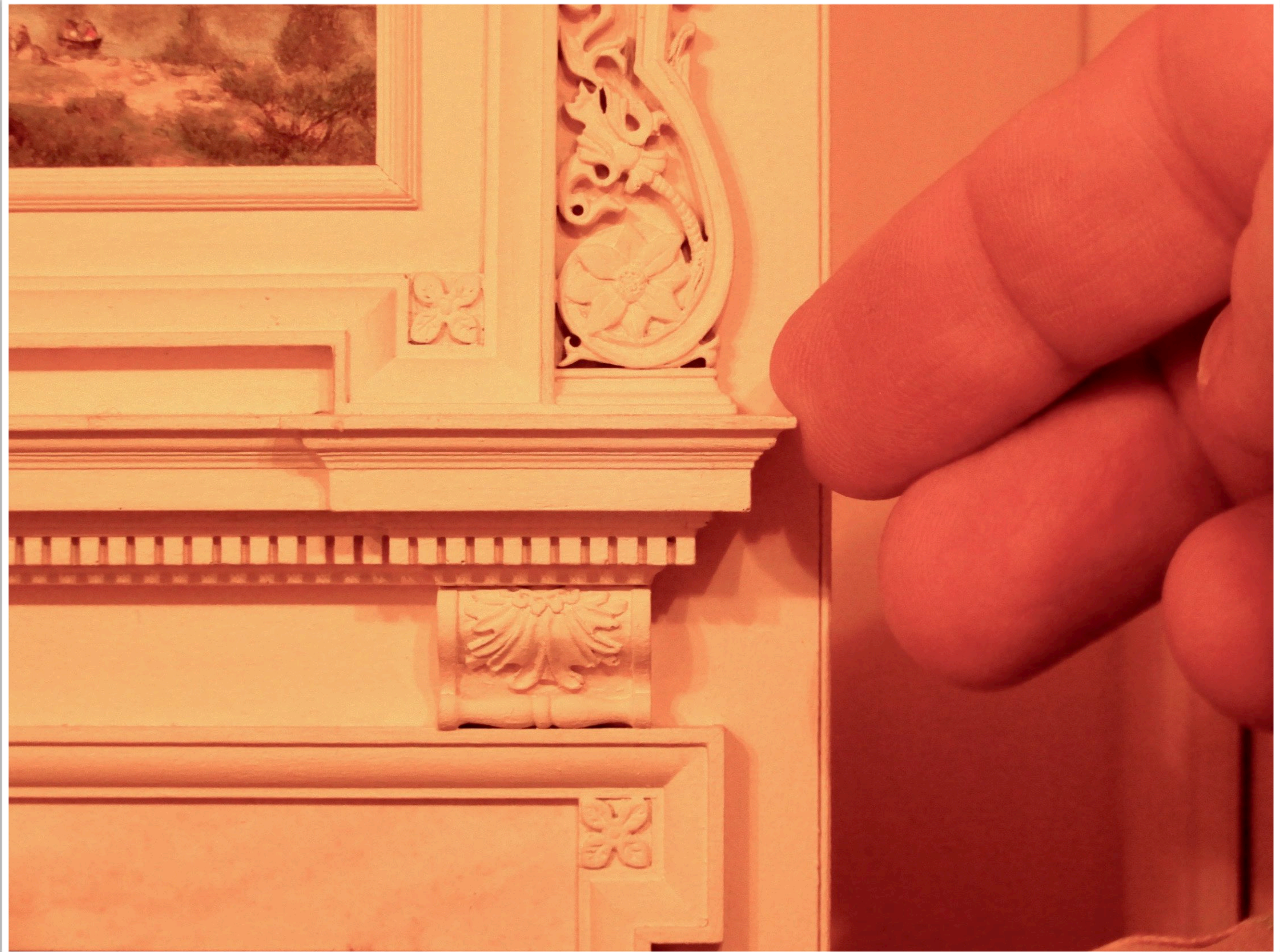
The door locks, latches,
windows and doors in Twin
Manors all work

Details include oval brass
door knobs, gold keys, etc.





Drawing Room











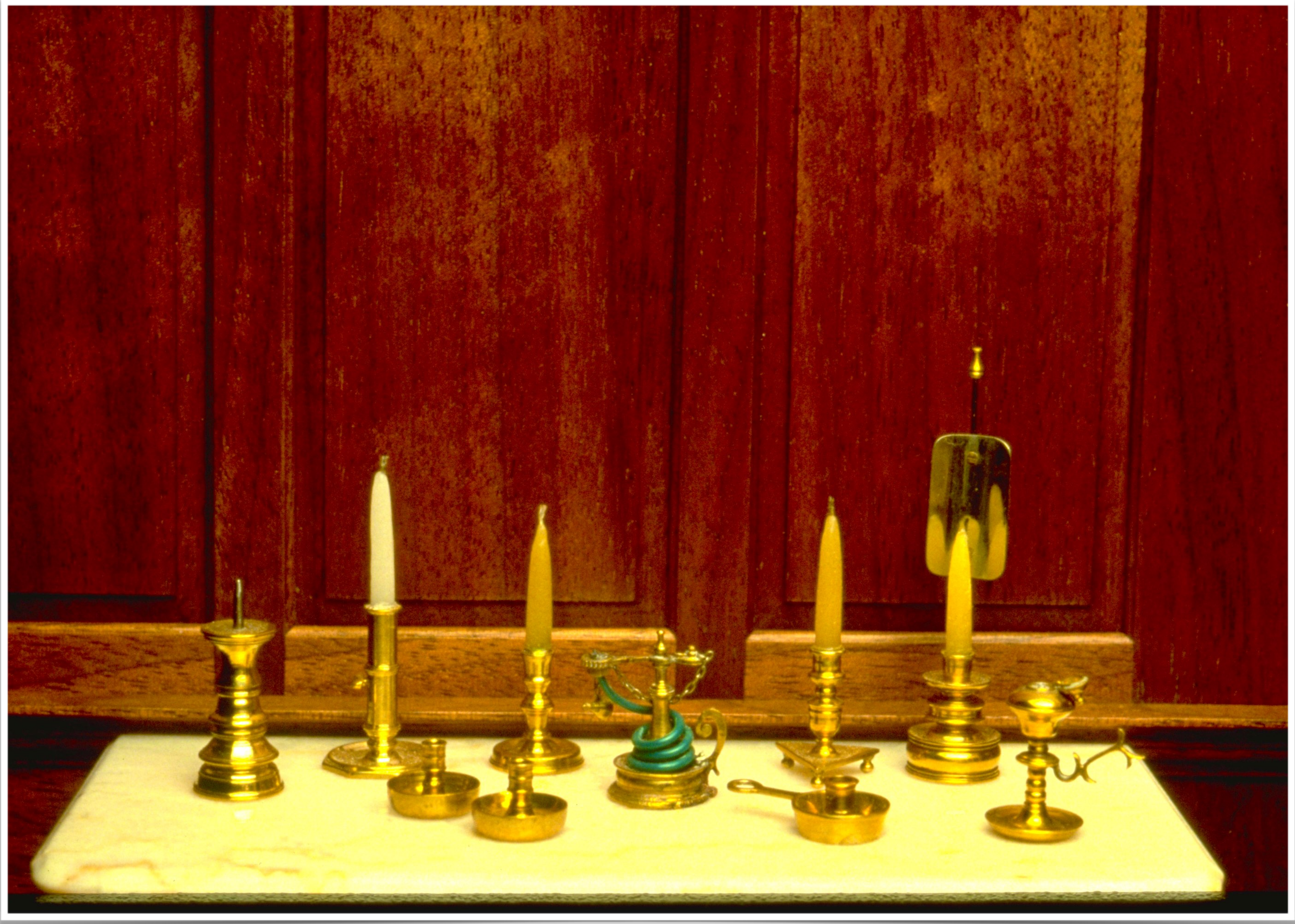




Study made from 300+ year old black walnut



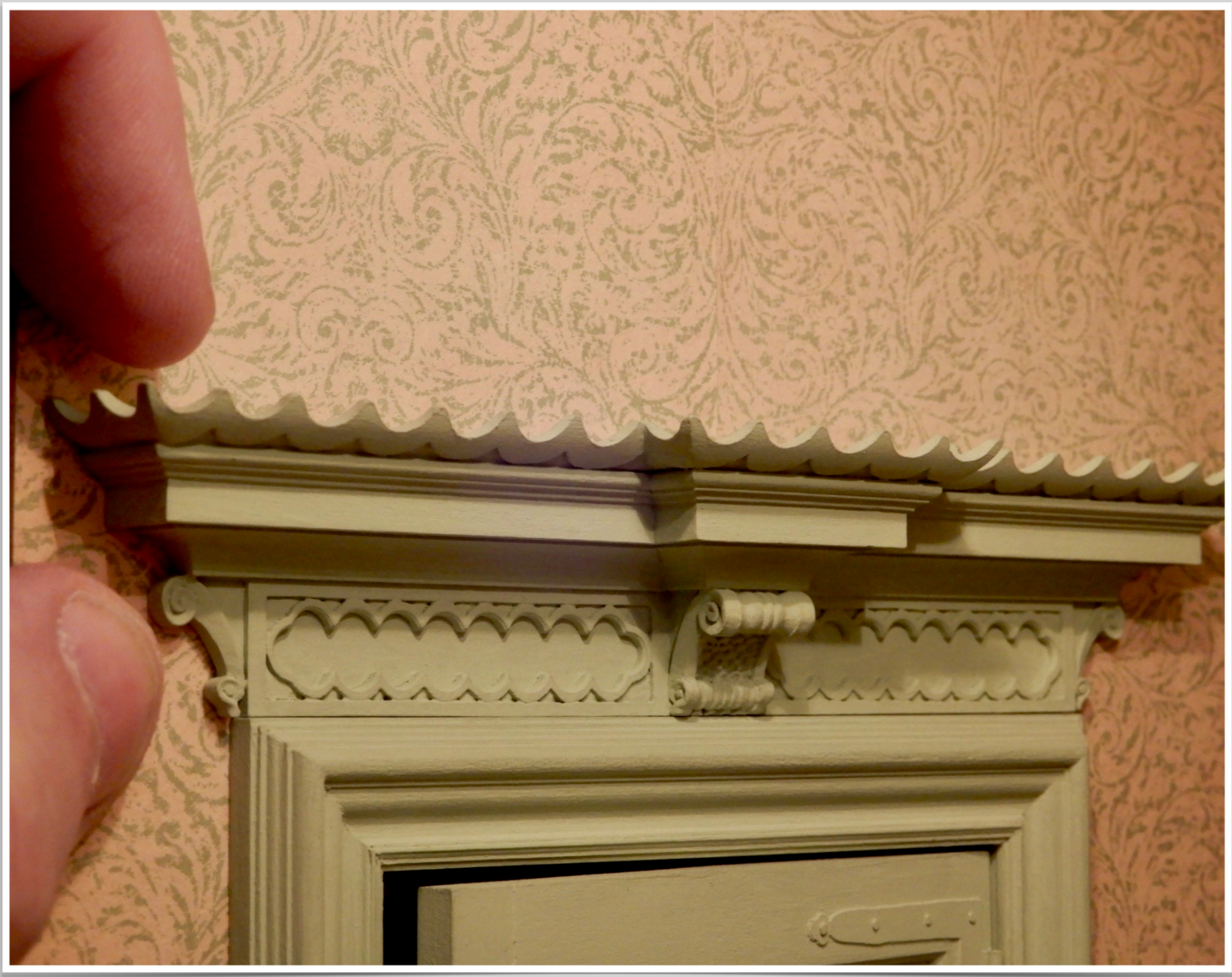






Morning Room in the Chinese Chippendale style













Dining Room





Silver, China and Glassware by Artists including

Pete Acquisto
Obadiah Fisher
Gordon Blacklock
Eugene Kupjack
Tom Chase
Cini
Ferenc Albert
Francis Whittemore
Rebecca Reilly
Laurel Coulen
Sue Sherrill

Debbie McKnight*
Teresa & Jean Welch
Frank Handly
Jeffery Geuno
Elizabeth Chambers
Jane Graber
Lynne Collins
Joan Westphal
Emily Good
Jean Tag
Jean Yingling

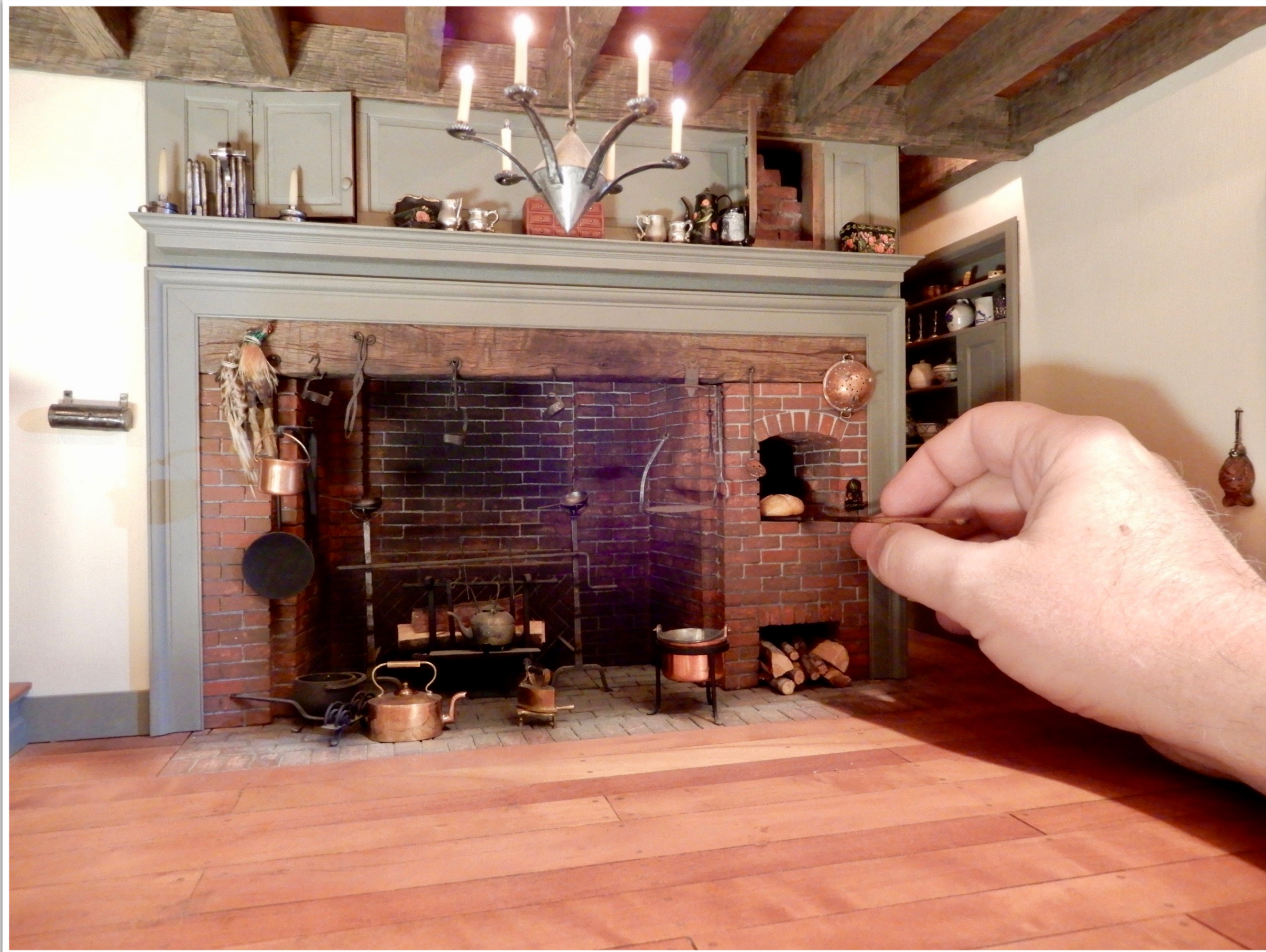








Kitchen













Back Stairs featuring hand hewn beams, pegged paneling. back side of plaster and brick



Back Bedroom





Behind the scenes, upstairs store and dressing rooms



Lady's Sitting Room

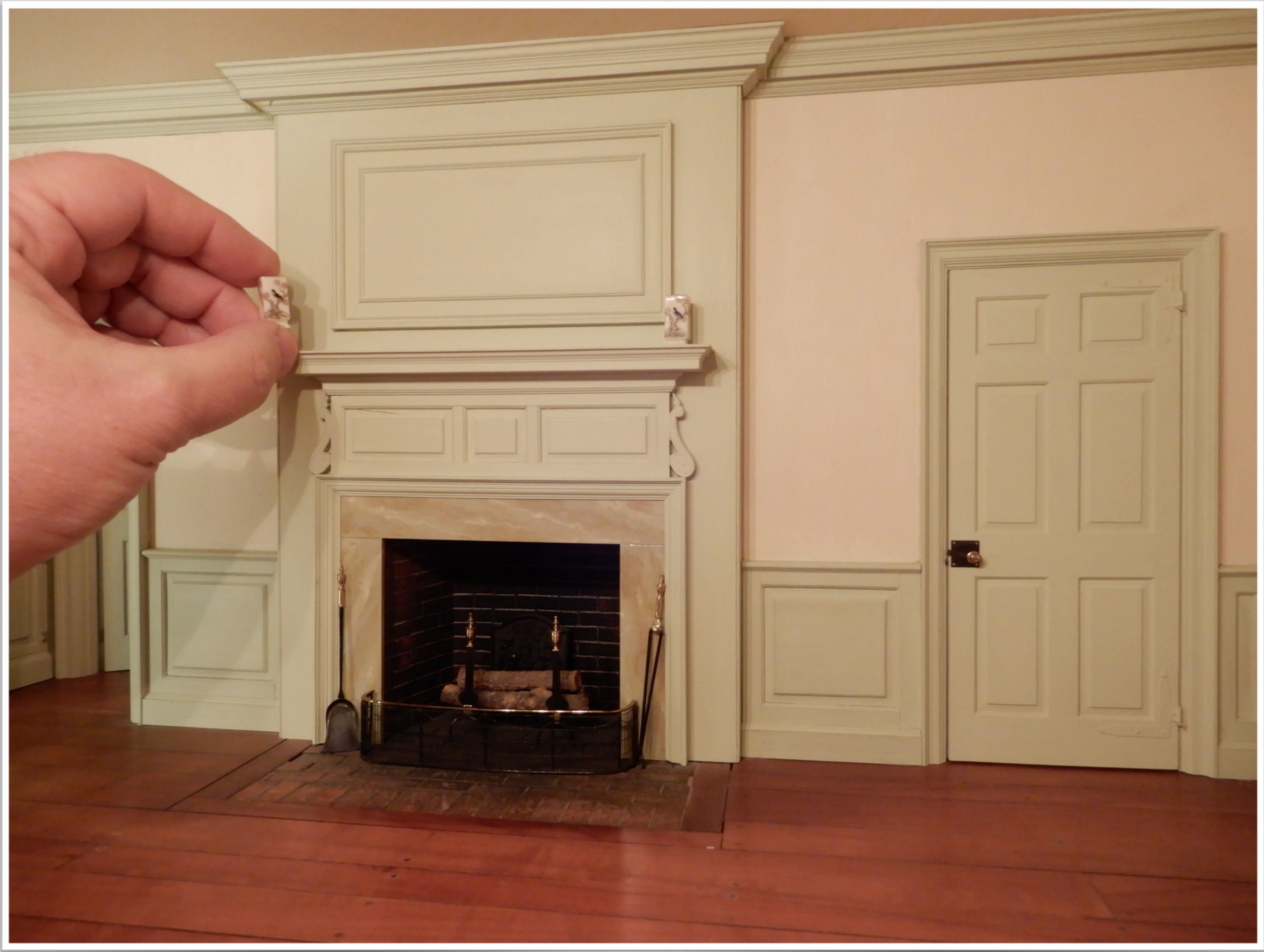


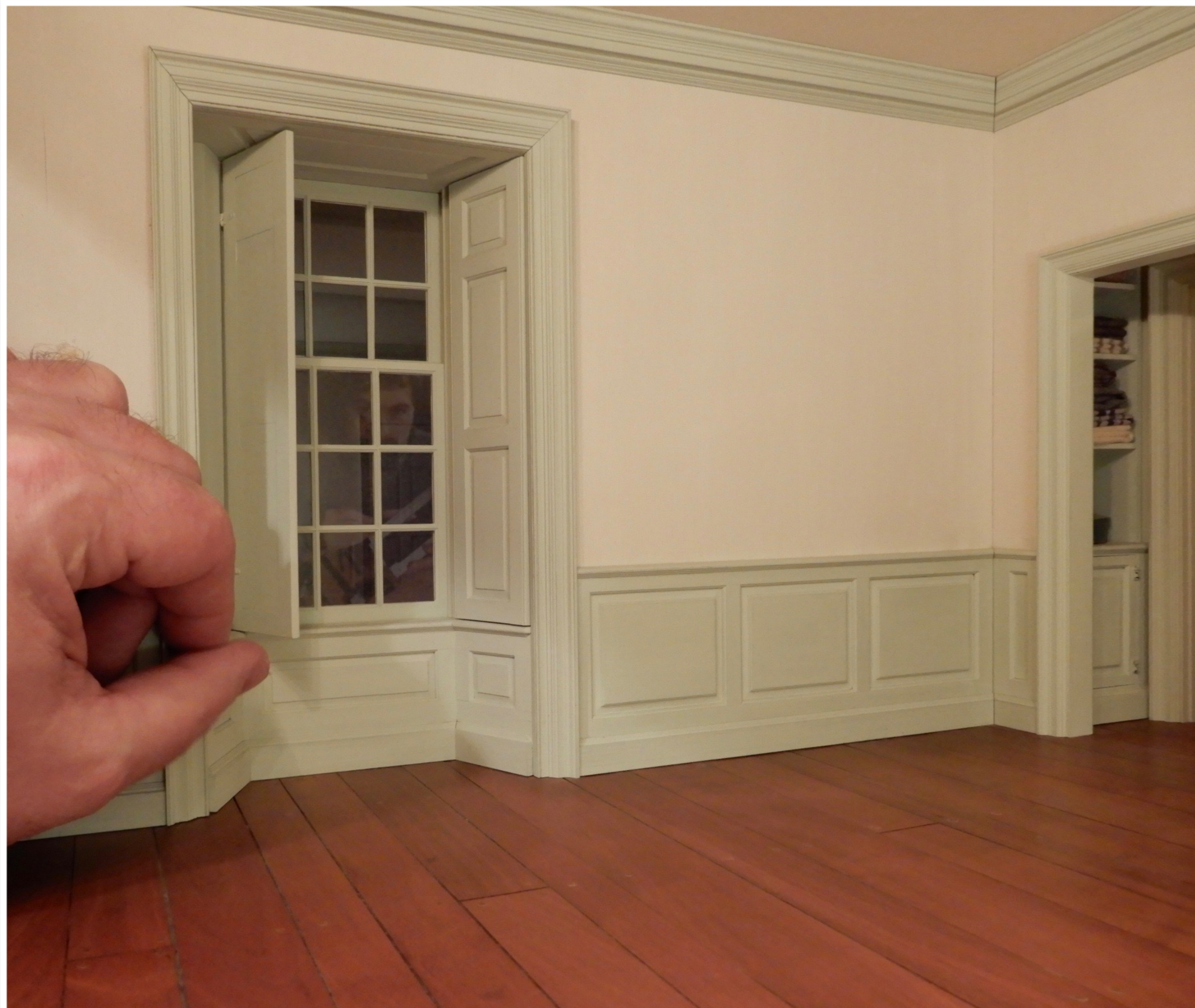




Green Bedroom















Rose Bedroom













Upstairs Hall











TWIN MANORS

IS FOR SALE



Twin Manors is being offered
COMPLETE with CONTENTS





Twin Manors sampler by Esther Robertson

If seriously interested lets talk, Bill

Twin Manors was finished nearly 35 years ago, here is a description written in the 1980s and some photos taken over the years. Robertson is currently upgrading the Twin Manors in his care. When done a new set of professional photos will be taken so stay tuned.

Twin Manors, American Colonies, c. 1760

Made in 1/12th scale by Wm. R. Robertson, 1979-1988

Twin Manors is a combination of the finest features of several 18th century Georgian style houses from Maine to Virginia. William R. Robertson envisioned the project in 1979 and spent nine years on the research and construction in conjunction with his mother, Esther R. Robertson.

Robertson decided to build two identical houses and then name them “Twin Manors”. His plan was for one house to be placed in the Robertson Collection and the other in the Toy and Miniature Museum of Kansas City, now The National Museum of Toys and Miniatures. The two houses are identical except for the color of the upper right front room.

Working from a 1/87th scale model which Robertson built, he constructed the houses over aluminum frames, drilled and tapped, with over 1,000 machine screws to keep them rigid and to prevent warping as they aged. He made special machinery, such as a miniature shaper, table saw and cutters, to create over 130 different types of hardwood moldings.

The front façade of the houses is rusticated (wood cut and painted with sand grit to simulate stone) such as at Mount Vernon, VA., The Lindens, Washington, D.C. and the Robertsons' favorite the Wentworth-Gardner House in Portsmouth, New Hampshire, c.1760. The front door, containing 216 pieces, is from the Wentworth-Gardner House. The front, back and sides are framed with giant pilasters of the Corinthian pattern. The back and sides contain approximately 500 linear feet of beaded siding. Both the front and back were lowered into the base with a power mechanism similar to power windows in a car.

The roof has approximately 12,000 hand-cut shingles made of walnut veneer. Robertson cut the cornice with a hand molding plane, an antique Stanley #55.

All visible nails are square, such as on strap hinges. He painted the brick work using a finely-ground 18th century “salmon” brick mixed into the paint. And the whitewash, used on the interior walls, was applied in the same manner as full scale using 1/12th size strokes and brushes. Throughout the house there are spring-loaded latches or locks (with tiny gold keys) and oval door knobs on the doors. Framing the fireplaces are marbleized facings. The floors, made of cherry from 200+ year-old trees cut down in the mid 1940’s at the house named Cherry Grove in Maryland, have over 3,000 pegs in the random width boards.

There are working windows and interior shutters on the side facades. Two fake windows on the sides provide symmetry which was very important in the design of the Georgian era.

The drawing room combines the designs of two houses, Graeme Park (Horsham, Pennsylvania c.1722) and Woodford (Fairmont Park, Philadelphia, Pennsylvania, c.1756) Approximately one hundred pieces of wood make up the carved overmantel. The oil painting by Marjorie Adams is a copy of “Lake Placid, N.Y.” after Asher Brown Durand. Tiny rosettes are carved in the dog eared molding surrounding the doors.

The center hallway combines features from Tulip Hill on the South River, Maryland, c. 1756 and The Lindens, first of Danvers, Massachusetts, c. 1754 and moved to Washington, D.C. in the mid 1930’s. Nine different sizes of balusters are found in the nearly 1,000-piece stairway. Over 50 hours of work went into making the wood cap on the railing. Heather Stewart Diaz painted the wallpaper in watercolor.

The dining room is an adaption of Wilton-on-the-James, Virginia c.1753 and also Wentworth-Gardner. The back wall is made up of approximately 250 pieces and the left wall has a hidden doorway leading to a pantry hallway to the kitchen.

The room above the dining room is the rose room (blue in the Museum’s house). The back wall is from the Dalton Club in Newburyport, Massachusetts, from the mid-18th Century. The fireplace is framed with bolection molding and decorated with ceramic tiles by Jean Yingling. A fake door on the right achieves the necessary symmetry.

The master bedroom (above the drawing room) was copied from the Gunston Hall library in Lorton, Virginia, c. 1750.

The kitchen combines ideas from the Jeremiah Lee Mansion in Marblehead, Massachusetts, c.1768. The ceiling is hand carved in walnut to represent hand hewn beams with knot holes. The doors above the fireplace open, exposing the rough brick work. Etched in one of the bricks is the inscription “Be Liberty Thine” as if done so by a patriot in the 18th century. The back stairwell leading off the kitchen is steep and curved showing post and beam construction, lath and plaster and rough brick with oozing mortar.

The morning room was taken from the Chinese Chippendale dining room at Gunston Hall. The design for the wallpaper is from the lining of an envelope from Italy. Making the wallpaper involved a photographic process, printing and then aging with a watercolor wash.

Based on a design from Graeme Park, the study is constructed of walnut from a 200+ year old tree cut in the mid 1940s at Cherry Grove. The finish took 15 hours of hand rubbing.

The back bedroom fireplace is from the Moore House, Yorktown, Virginia, where the Revolutionary War ended on October 18, 1781.

The lady’s sitting room is typical of the 18th Century. Dog eared moldings are used on the doors and windows. The window seat opens for storage and there is a false floor for hiding valuables.

Other people who contributed their ideas, help and support to this project include: Marjorie Adams, Mark Aker, Chuck Cook, Heather Diaz, Lou Dozier, Ruth Kettl, Barbara Marshall, Brad Mizell, Rick Pelasara, Robert Raines, Mr. and Mrs. George Riggs, Robert Rothen, Norman Veber, Sandra Williams, Robert and Sharon Wolozin and Jean Yingling.



The end of Twin Manors tour